

1

2

3

4

1:20>1

1:20>2

1:15

1:16

1:18

1:10

1:6>3

1:5>2

1:2>1

S:5

Tjuvön

1:17>1

S:1>2

S:4

1:37

S:1>3

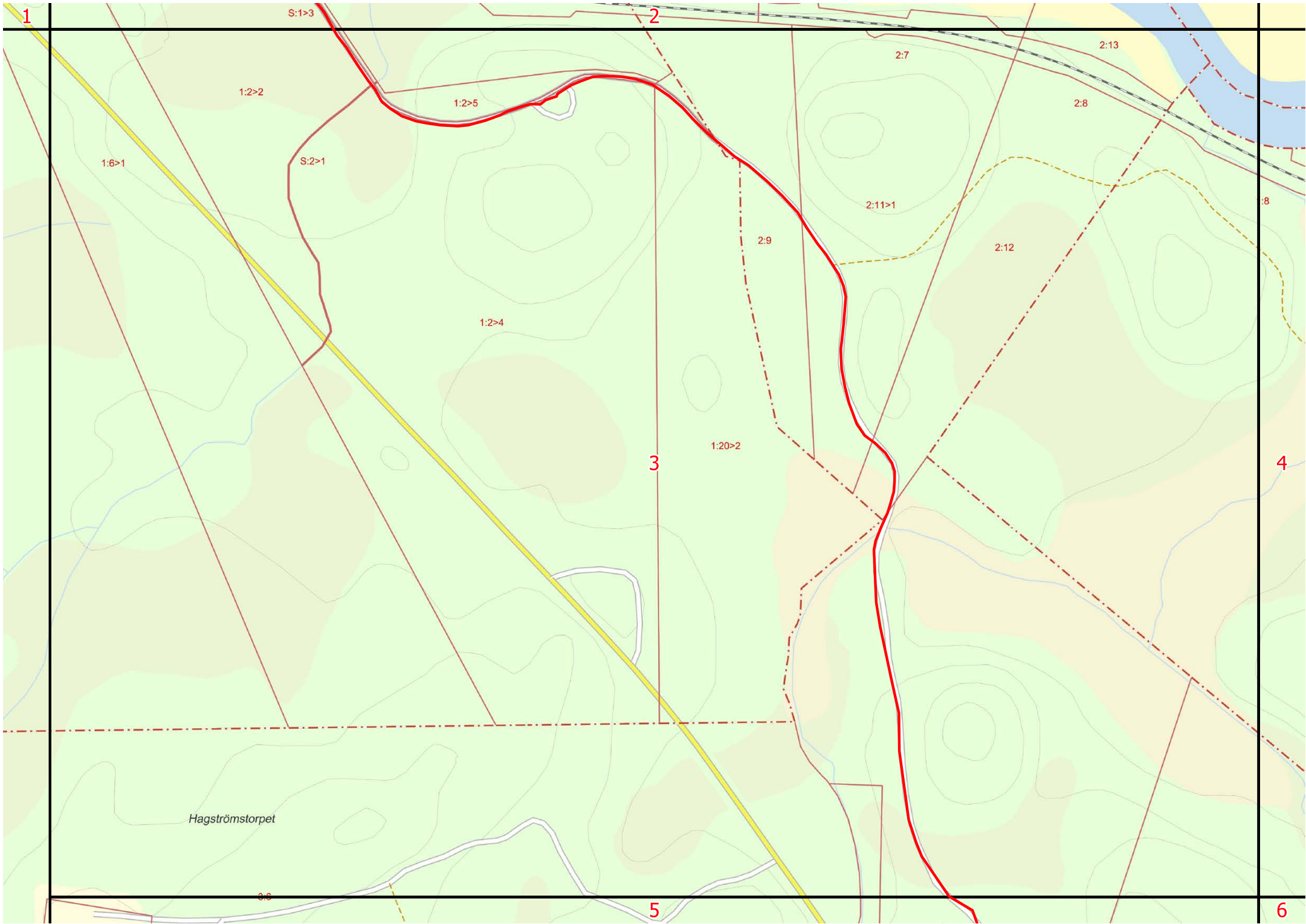
1:6>2

2:6

2:11>2

2:13





1

2

3

4

5

6

S:1>3

1:2>2

1:2>5

S:2>1

1:6>1

1:2>4

2:7

2:13

2:8

2:11>1

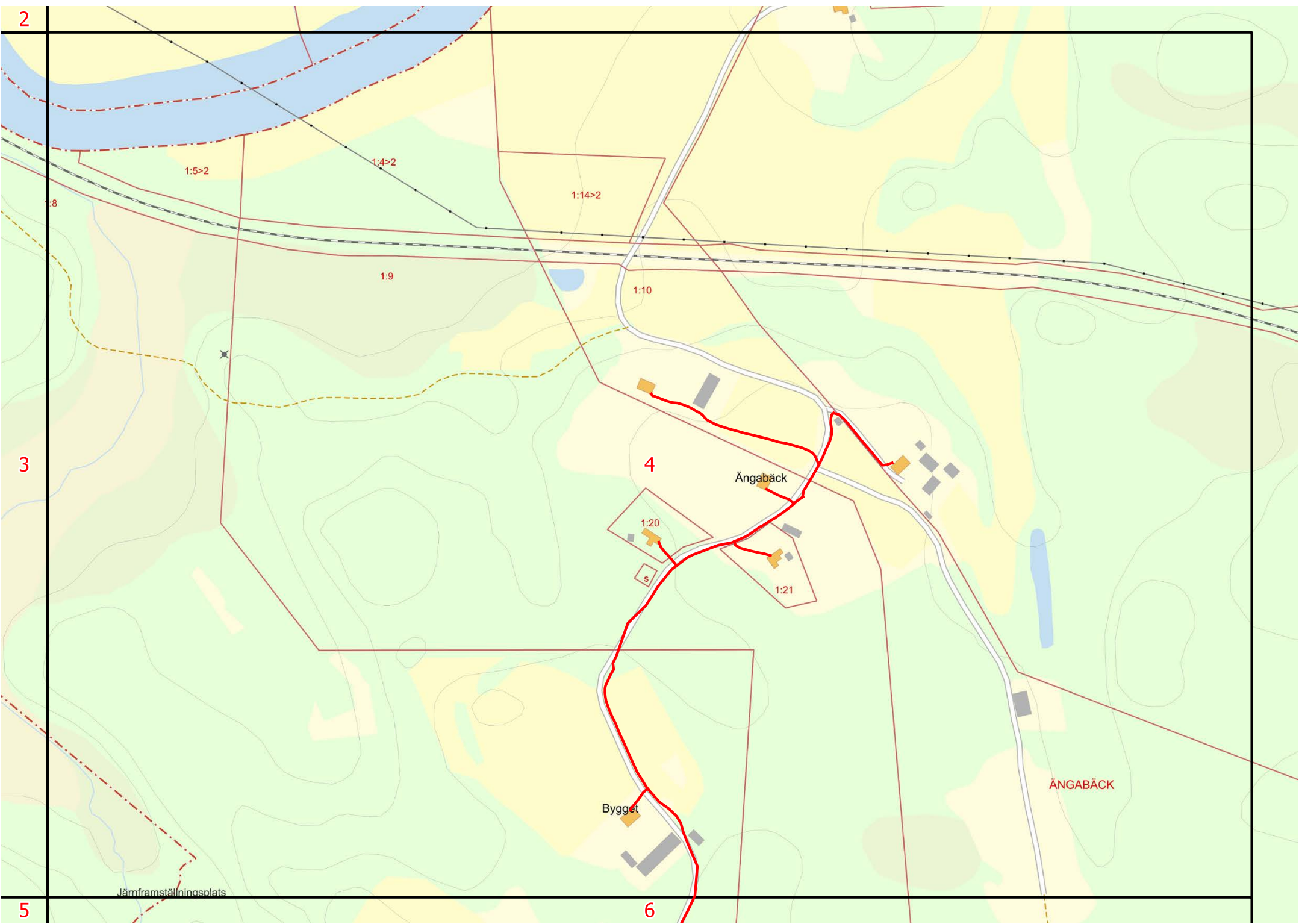
2:9

2:12

1:20>2

Hagströmstorpet

8:8



2

3

5

4

6

1:5>2

1:4>2

1:14>2

1:9

1:10

1:20

1:21

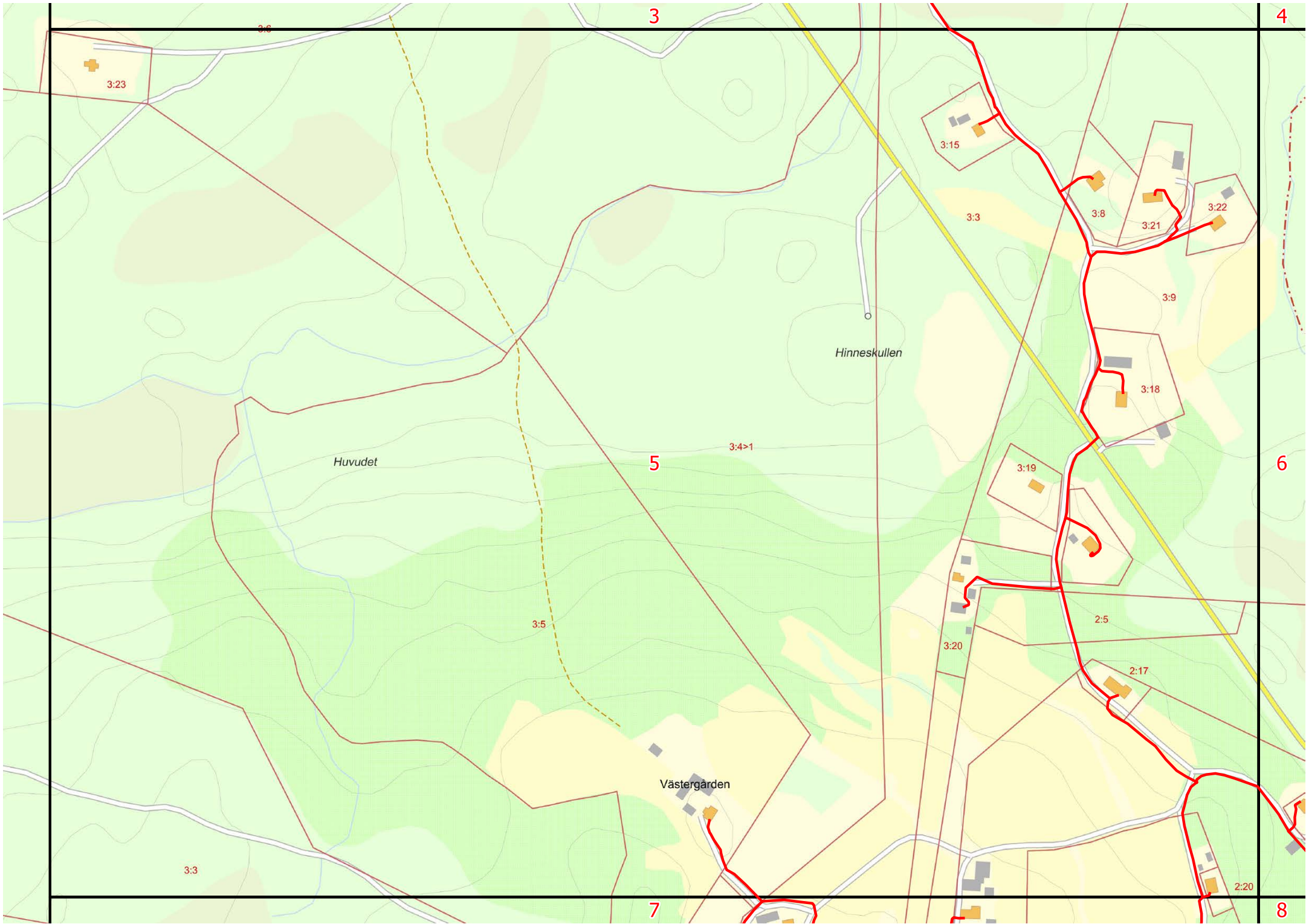
Ångabäck

Bygget

ÅNGABÄCK

Järnframställningsplats





3

4

3:23

3:15

3:3

3:8

3:21

3:22

3:9

Hinneskullen

Huvudet

5

3:4>1

6

3:19

3:18

3:5

2:5

3:20

2:17

Västergården

3:3

2:20

7

8

Järnframställningsplats

1:5>1

1:4>1

1:14>1

2:2

2:15

2:20

3

4

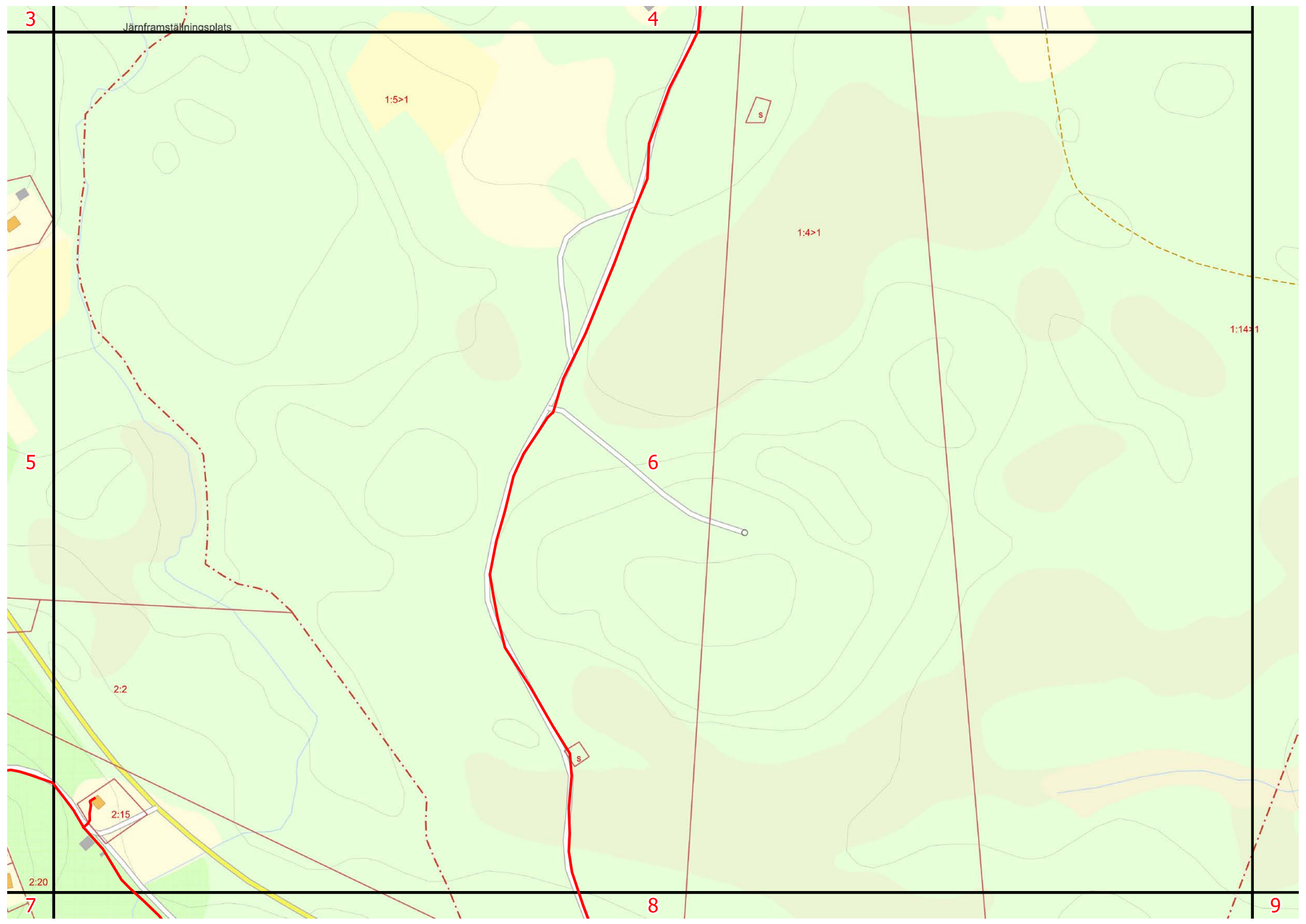
5

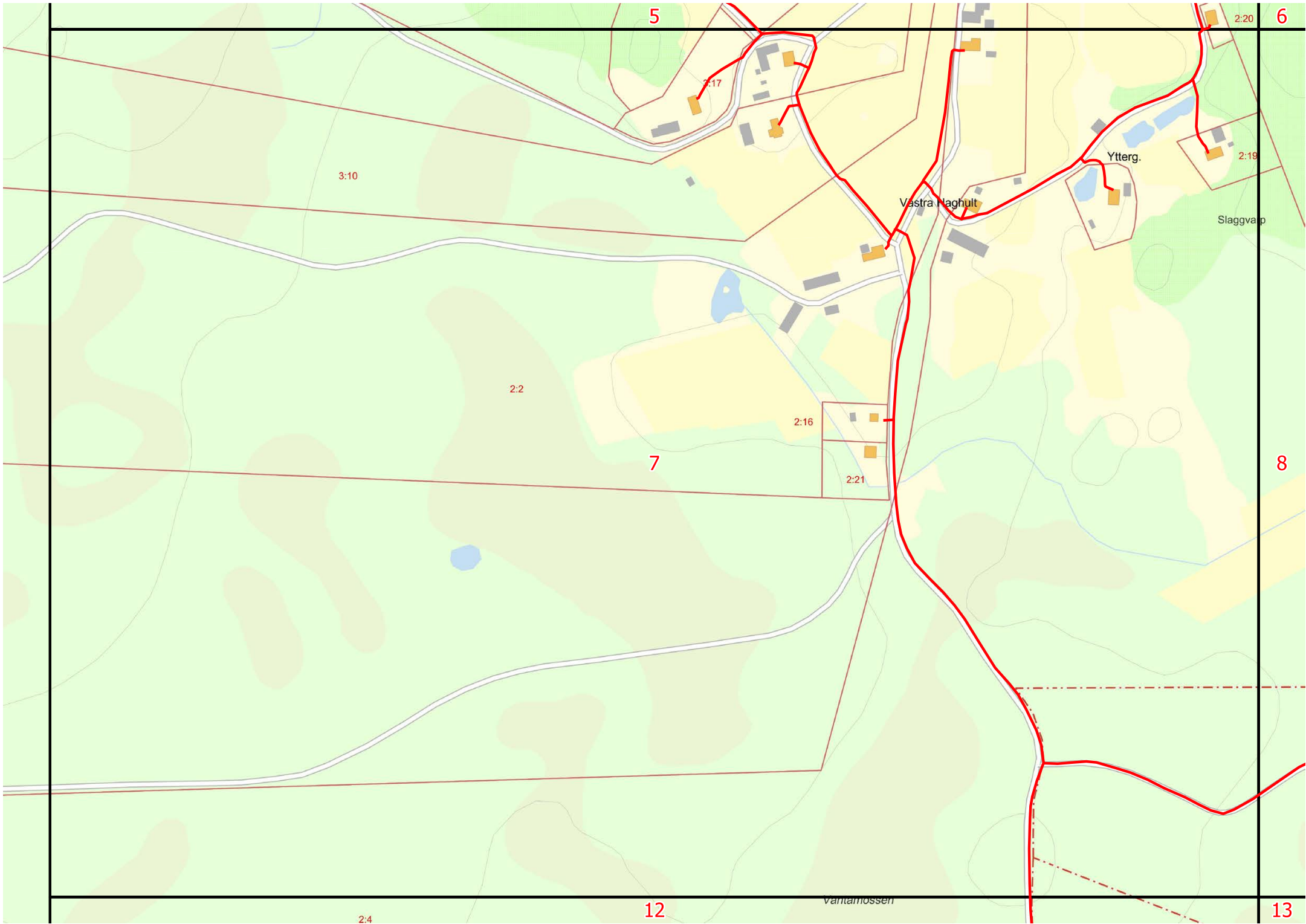
6

7

8

9





5

6

3:10

2:17

2:20

Ytterg.

2:19

Vastra Haghult

Slaggvap

2:2

2:16

7

8

2:21

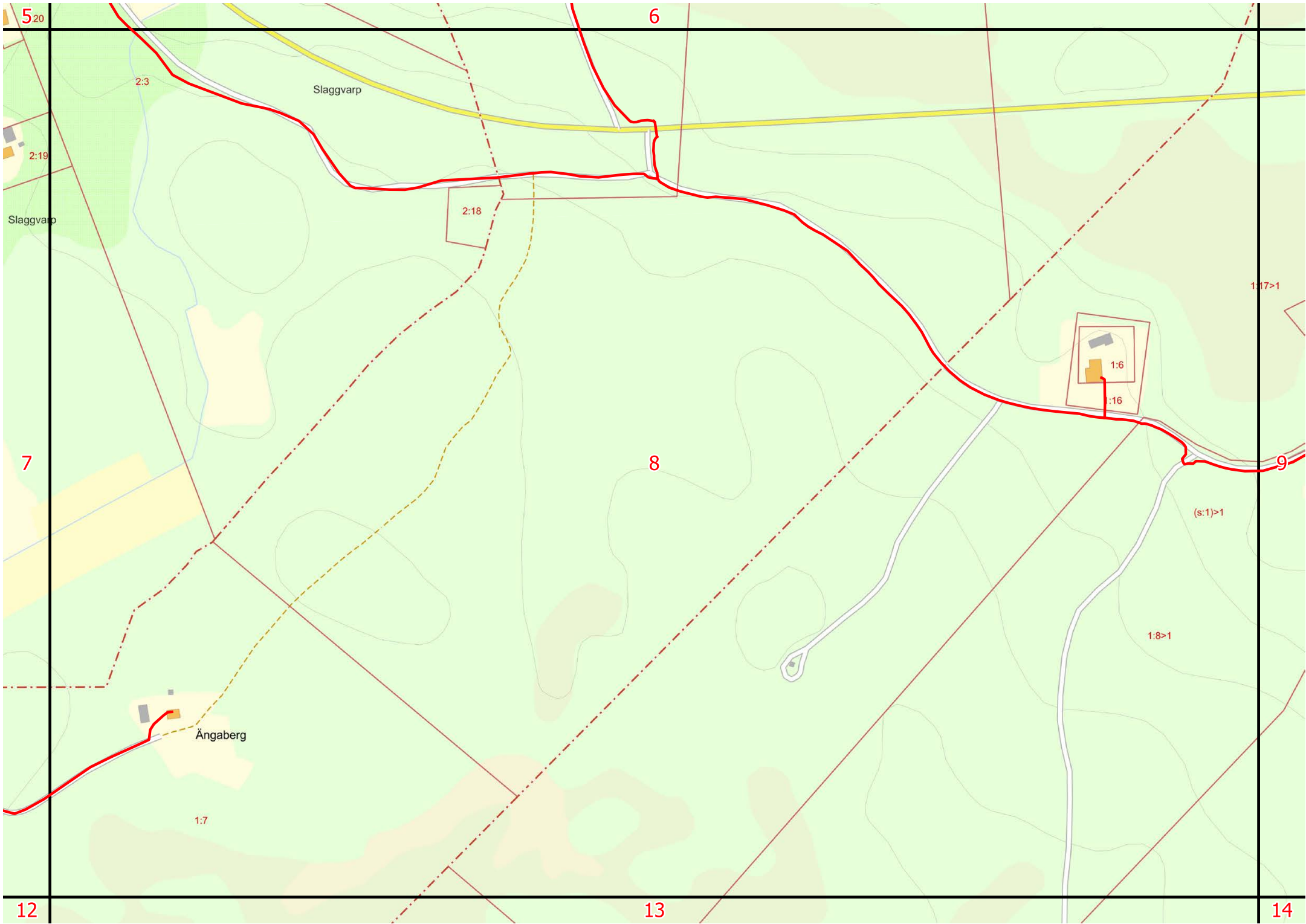
2:4

12

vannmossen

13





5

6

2:19

2:3

Slaggarp

2:18

Slaggarp

1:17>1

1:6

:16

7

8

9

(s:1)>1

1:8>1

Ångaberg

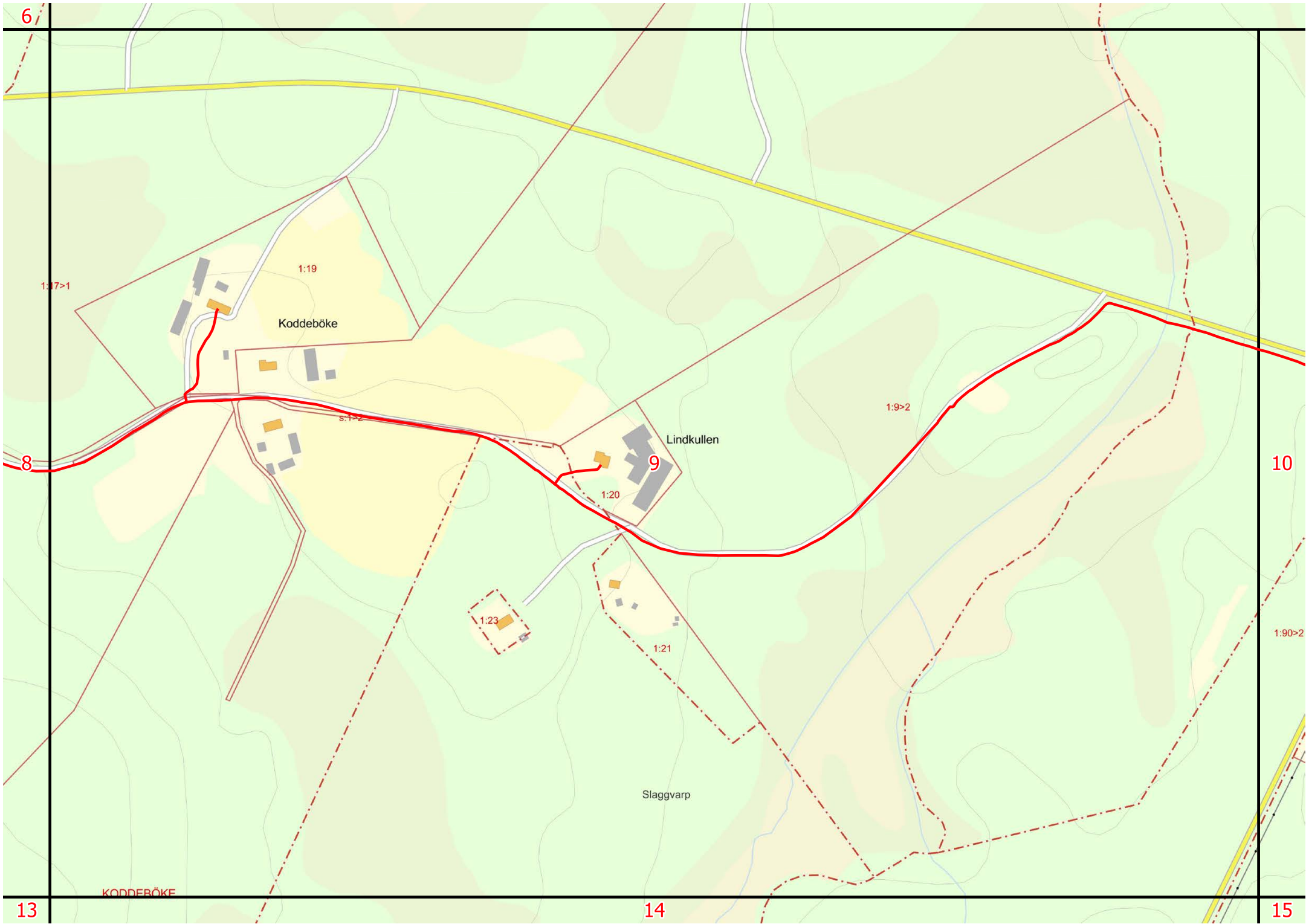
1:7

12

13

14





6

1:17>1

1:19

Koddeböke

s. 1-2

Lindkullen

9

1:20

1:9>2

1:23

1:21

Slaggvarp

10

1:90>2

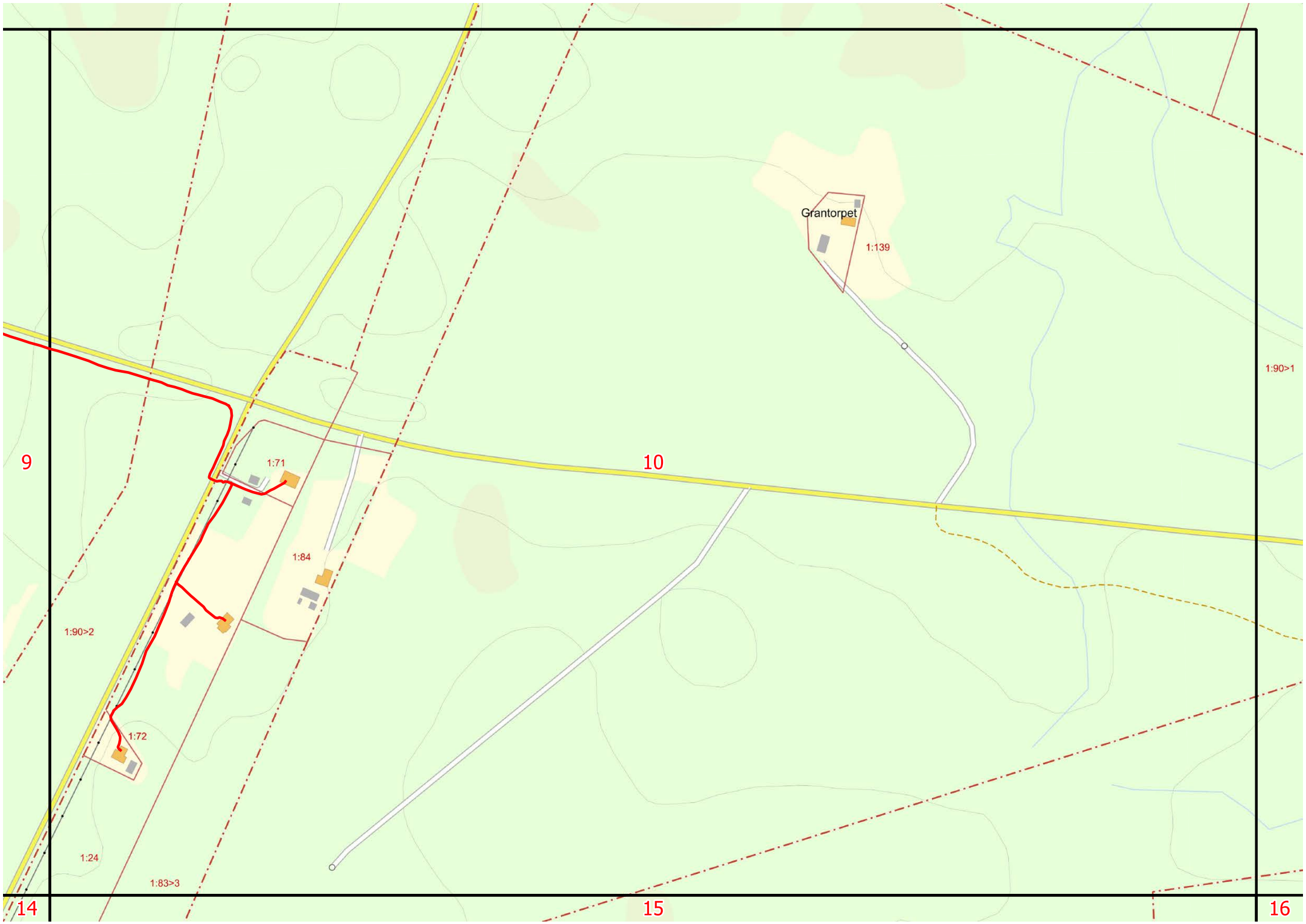
8

KODDEBÖKE

13

14

15



9

10

1:90>1

Grantorpet

1:139

1:71

1:84

1:90>2

1:72

1:24

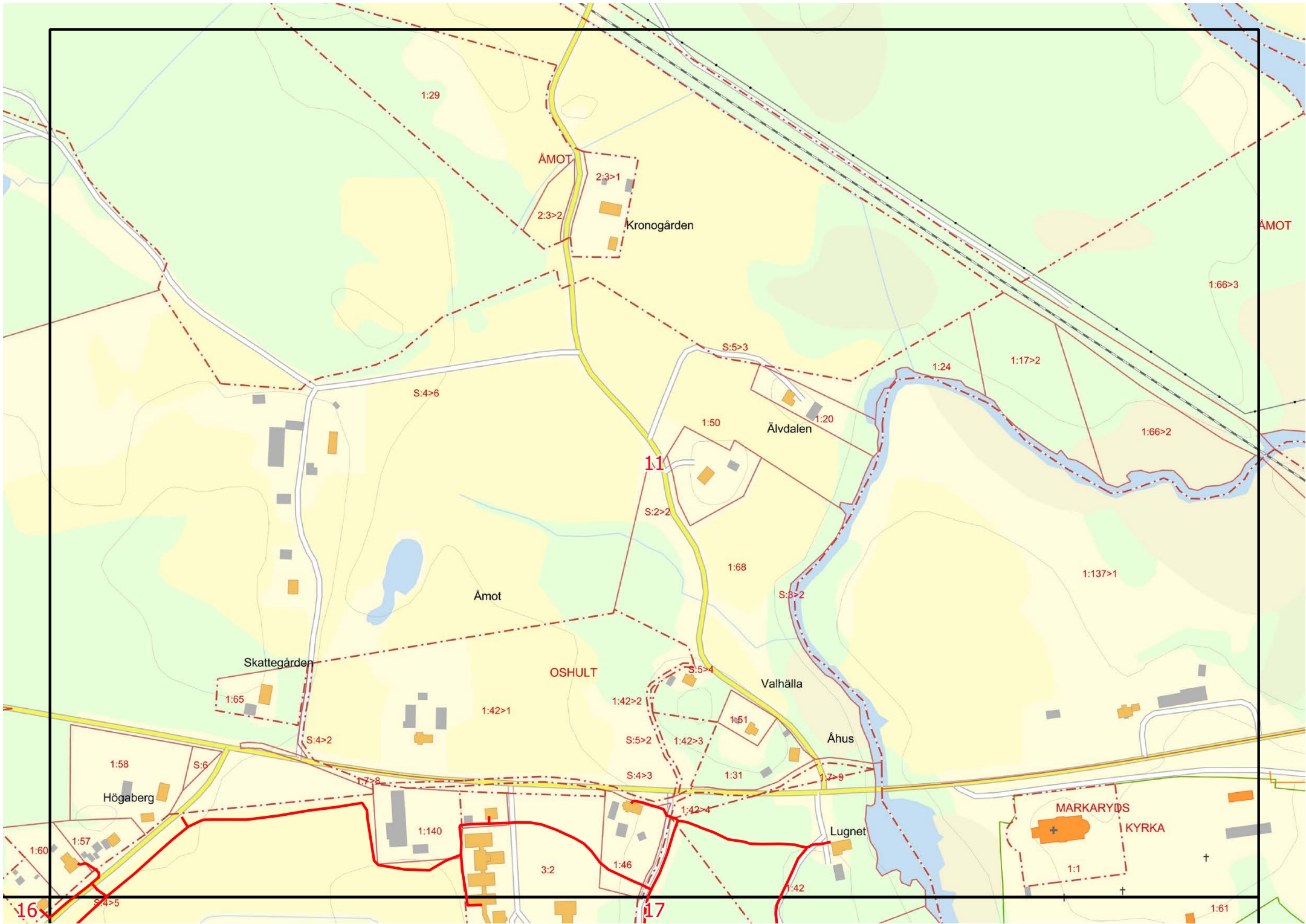
1:83>3

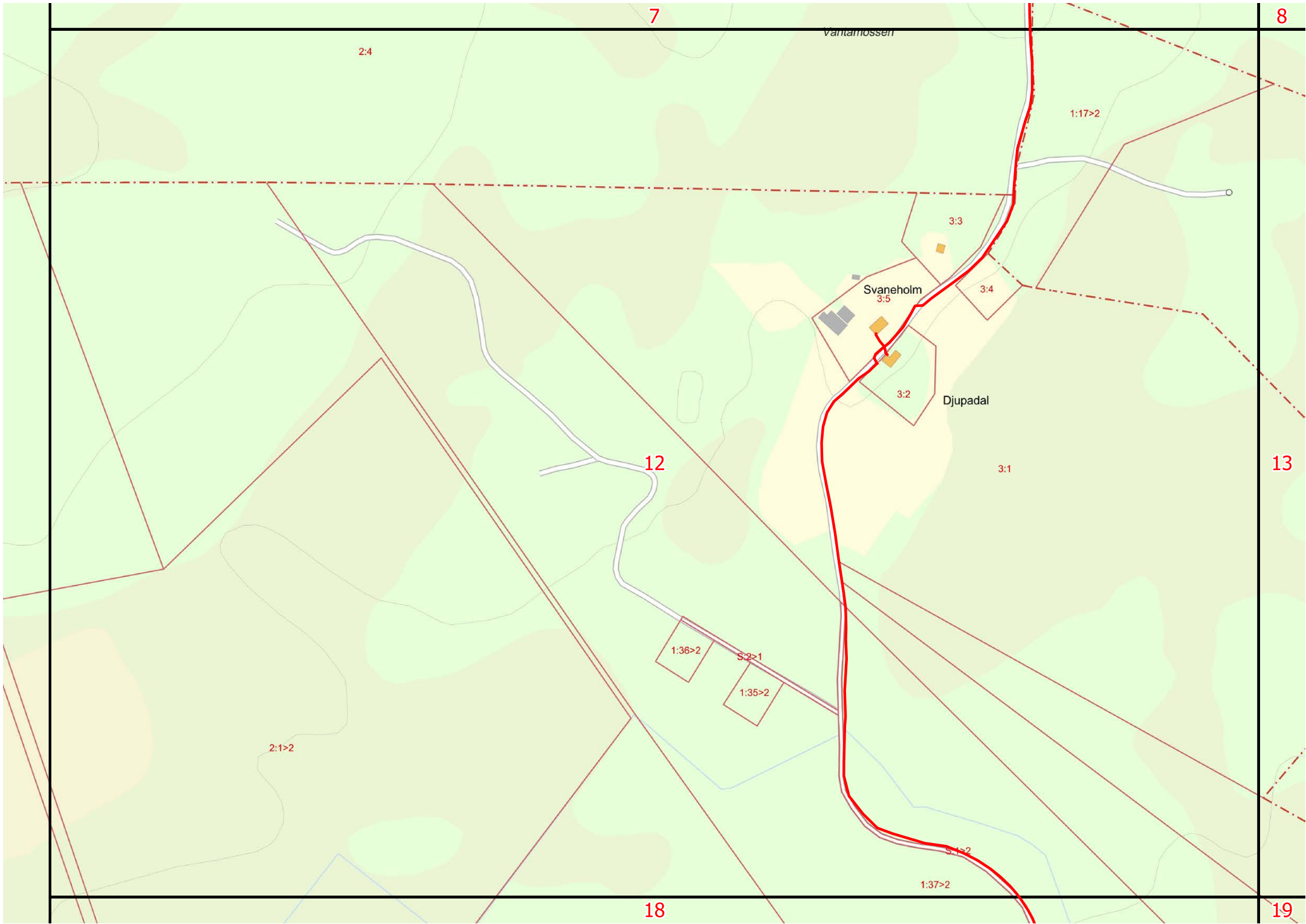
14

15

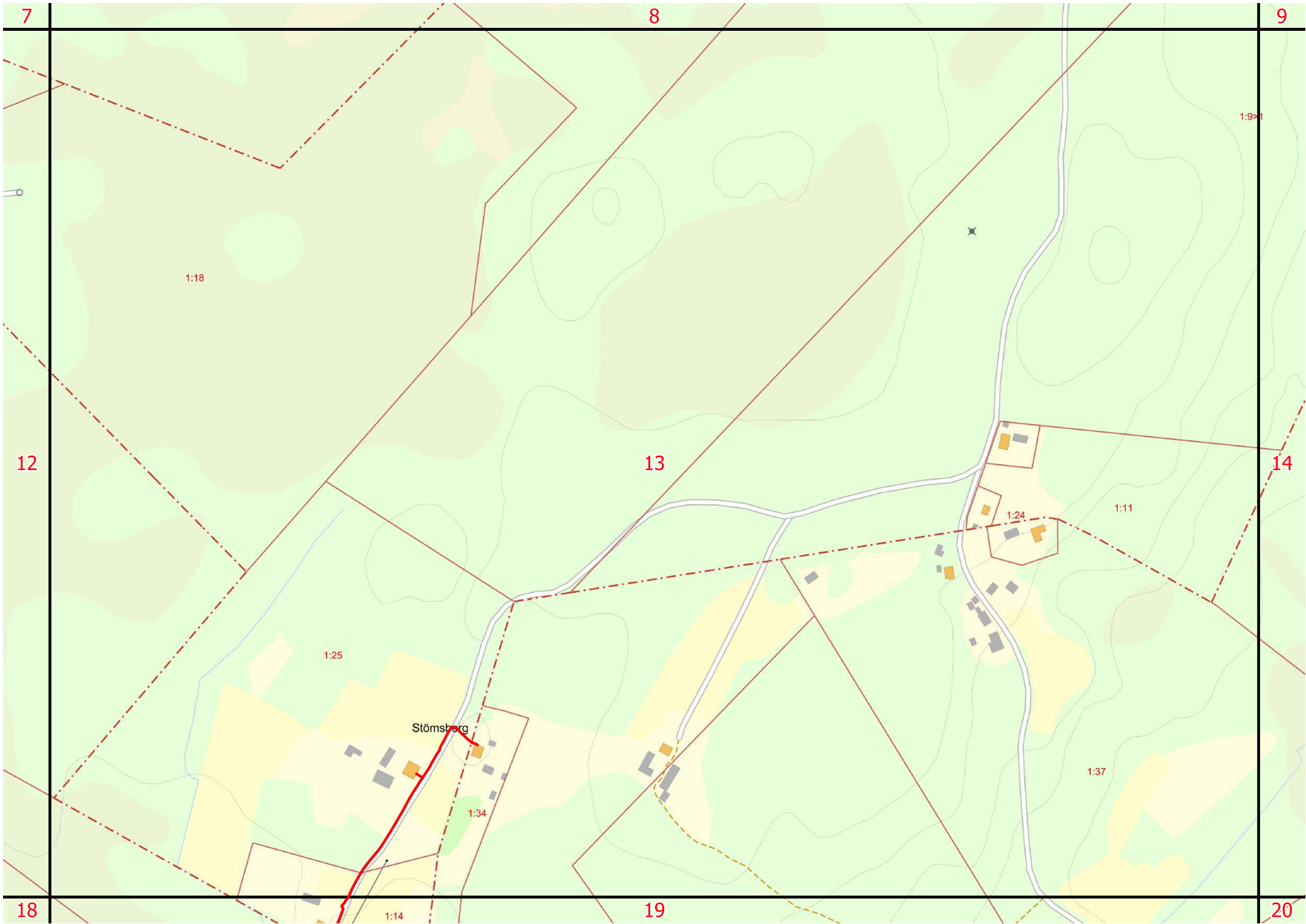
16











7

8

9

12

13

14

18

19

20

Stömsberg

1:18

1:9

1:25

1:11

1:24

1:34

1:37

1:14

8

KODDEBÖKE

9

10

1:9>

1:42>2

13

14

15

19

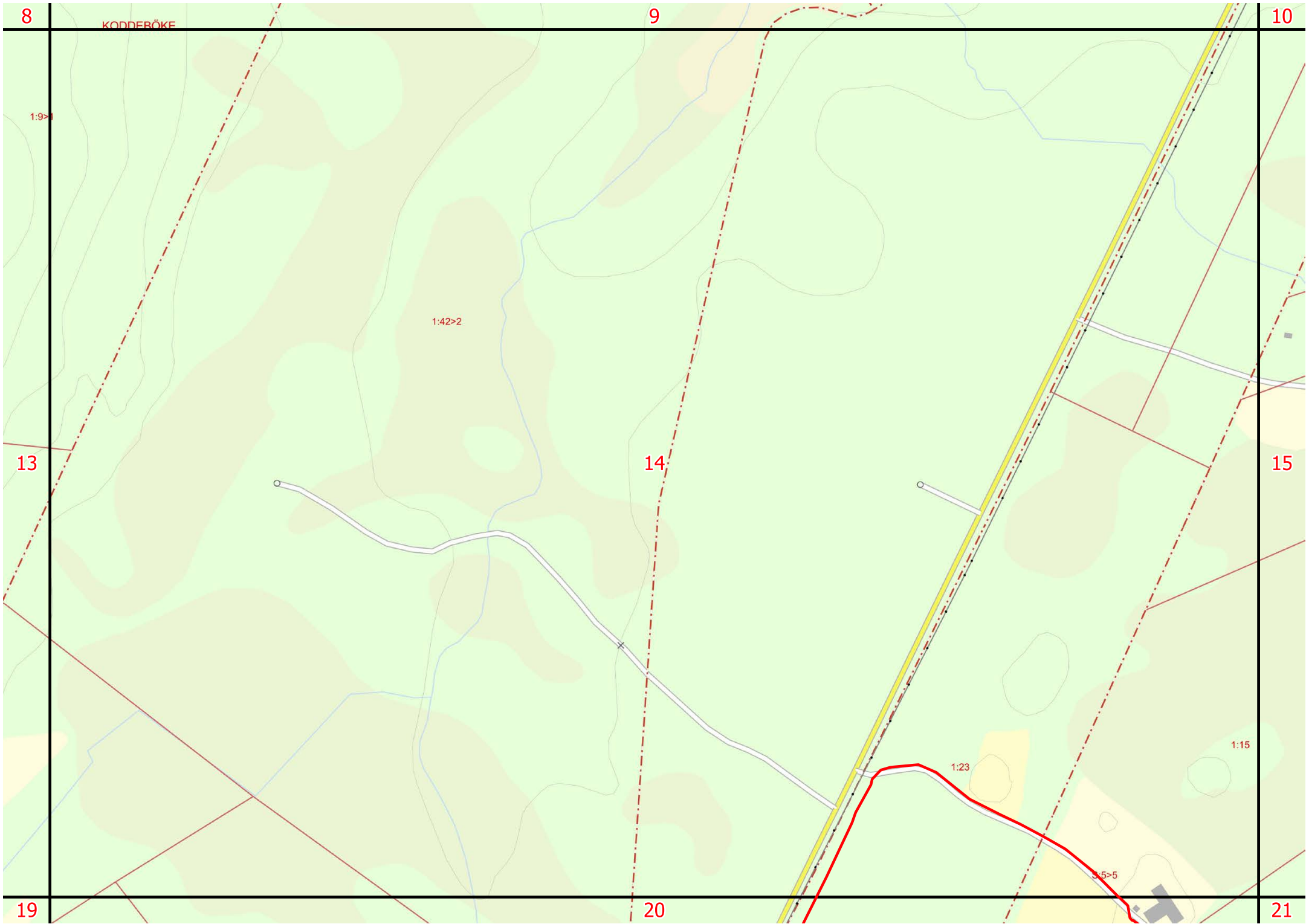
20

21

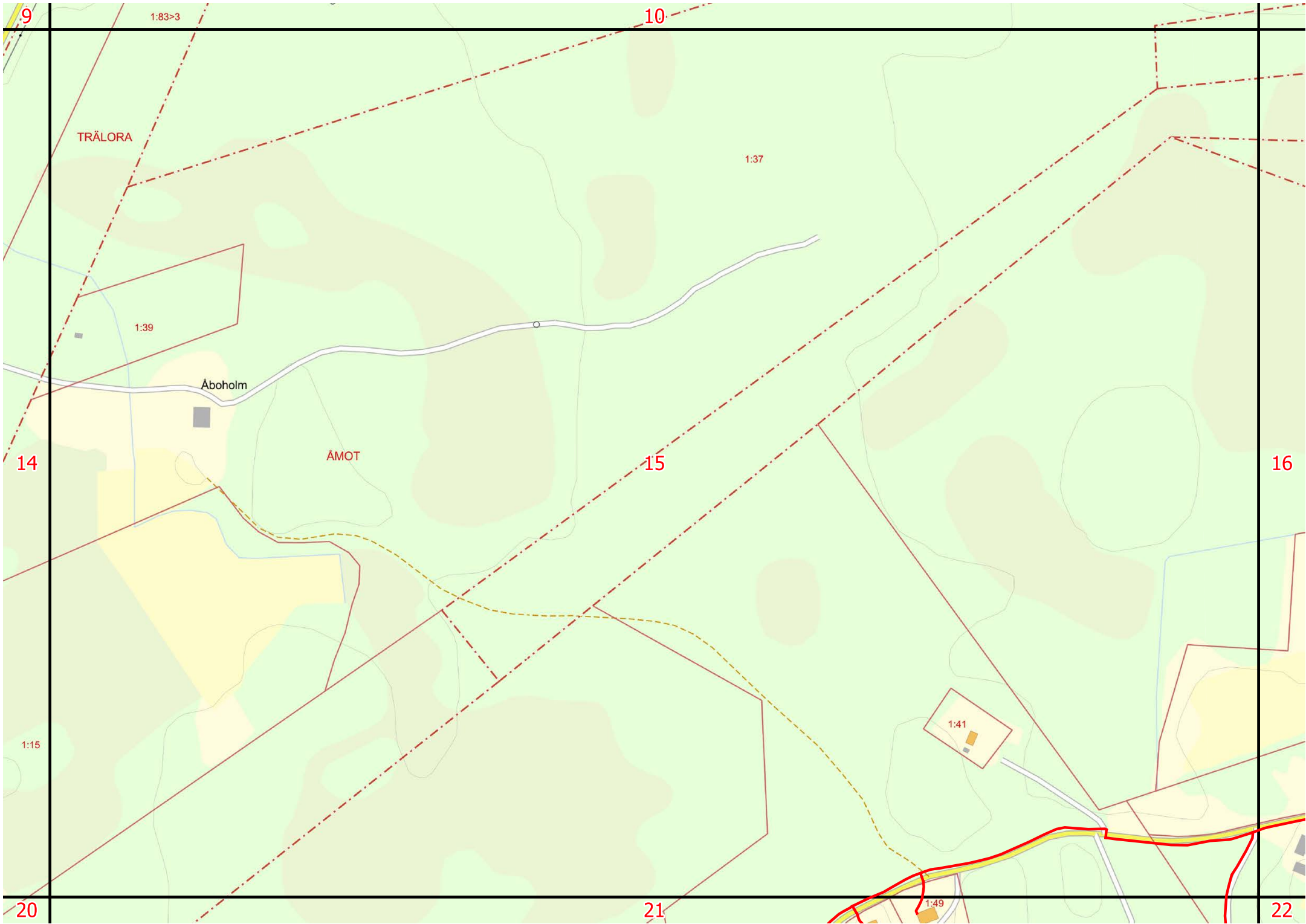
1:23

1:15

3.5>5







9

1:83>3

10

TRÄLORA

1:37

1:39

Aboholm

ÅMOT

14

15

16

1:15

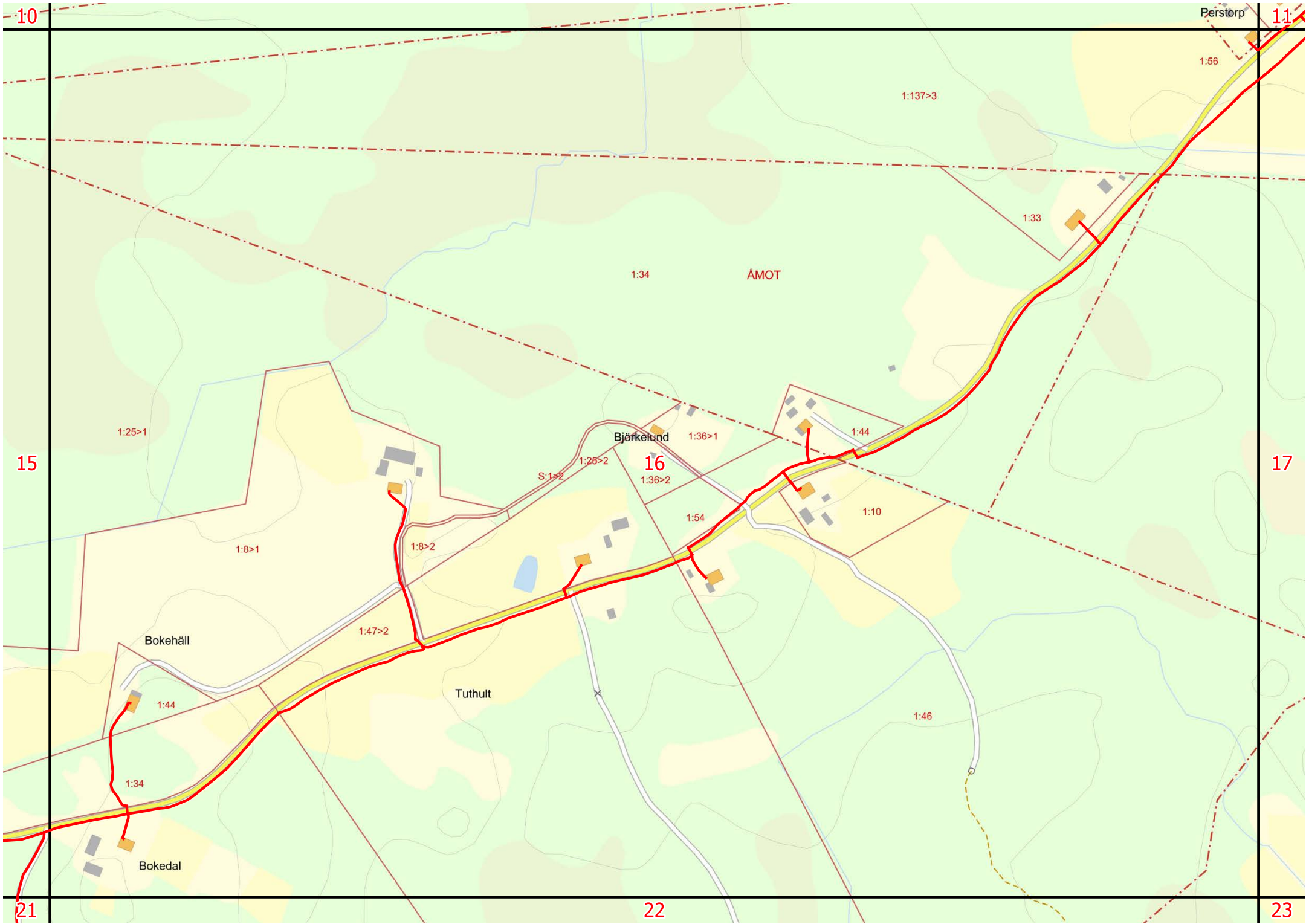
1:41

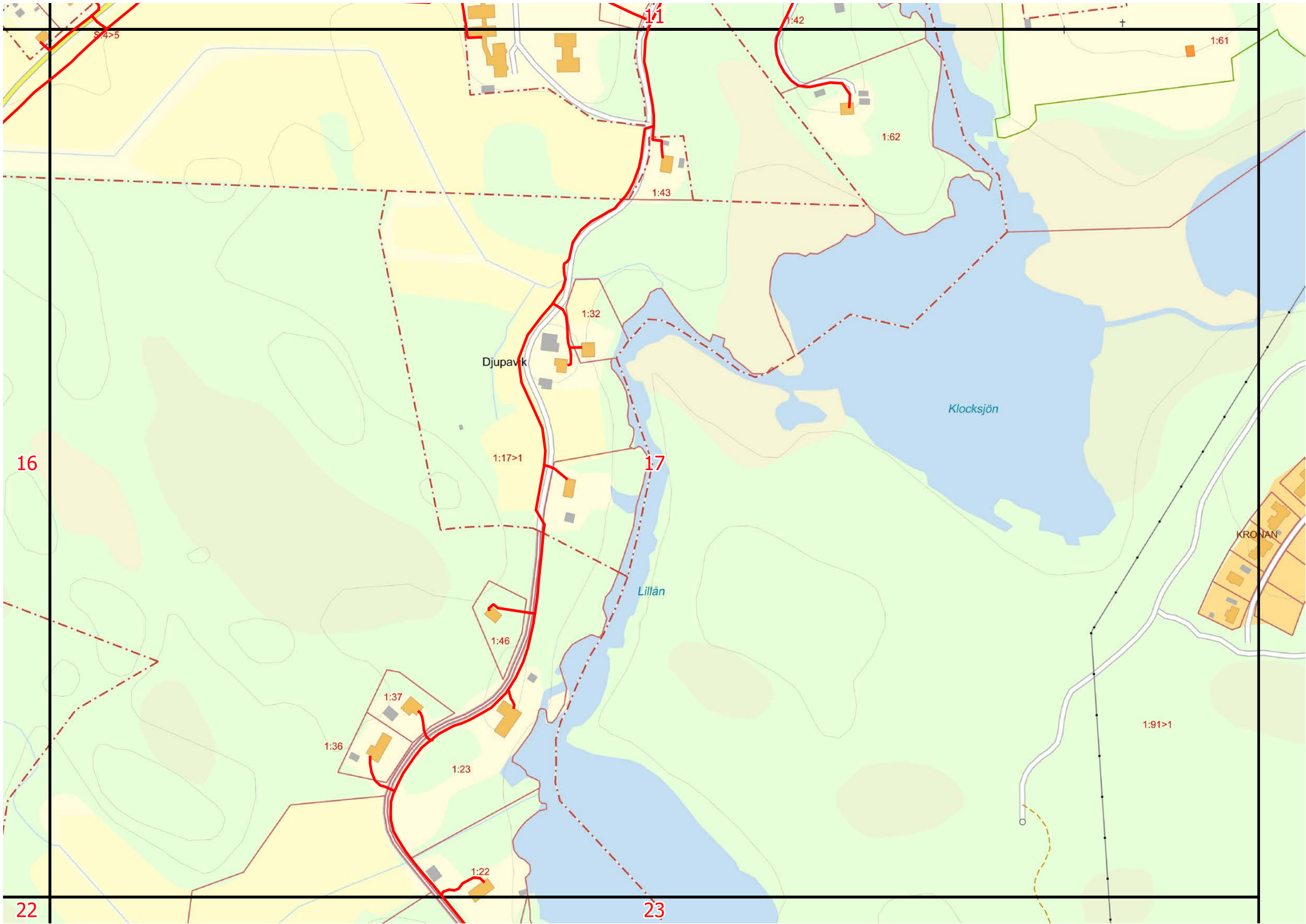
20

21

22

1:49





16

22

17

23

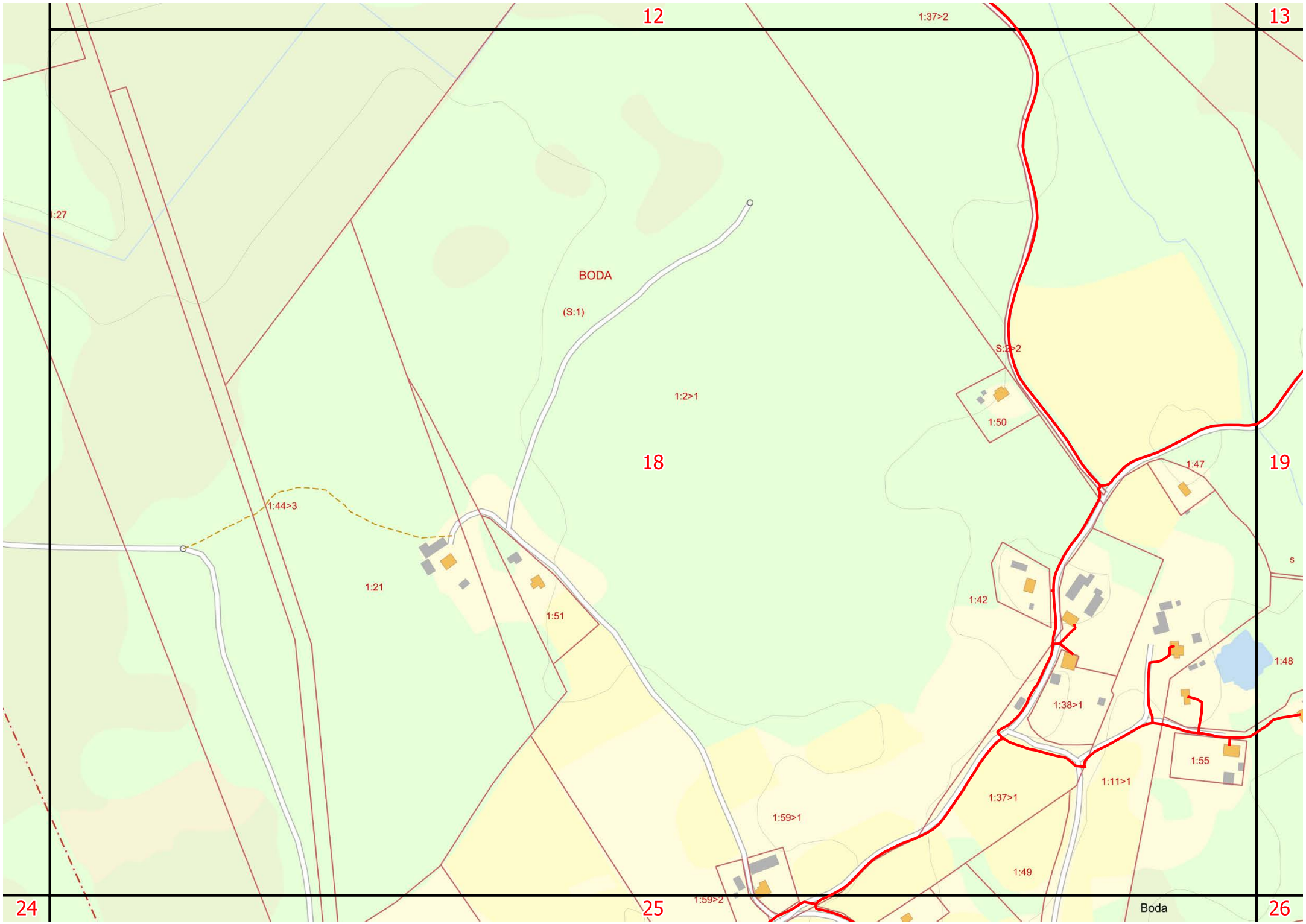
Djupavik

Klocksjön

Lillån

KRONAN





12

13

14

18

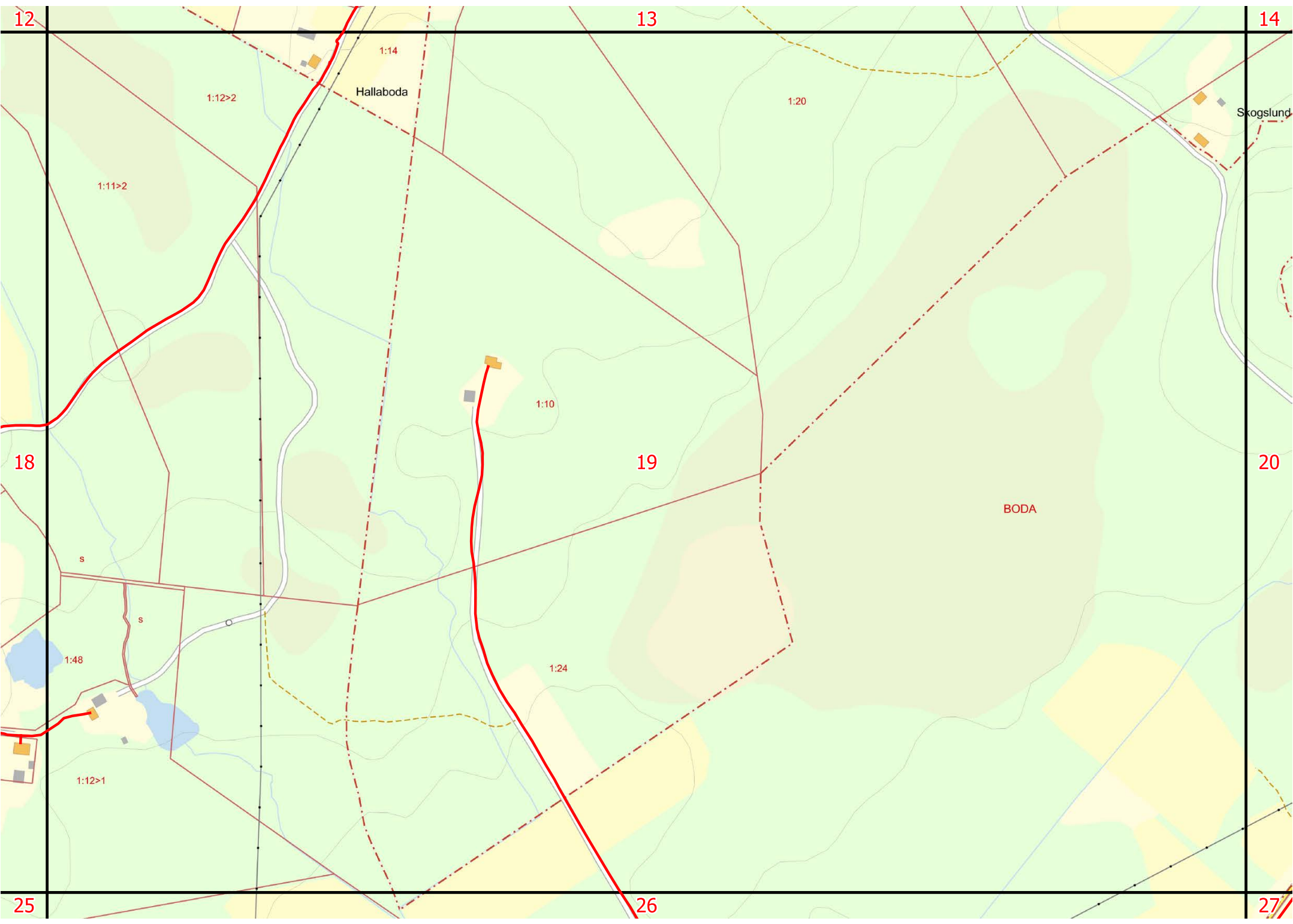
19

20

25

26

27



13

14

15

1:30

1:16

Skogslund

1:17

Lunden

1:38

1:22

1:39

19

20

21

1:16

1:32

1:14>3

S:1>1

26

27

28

3:5>5

